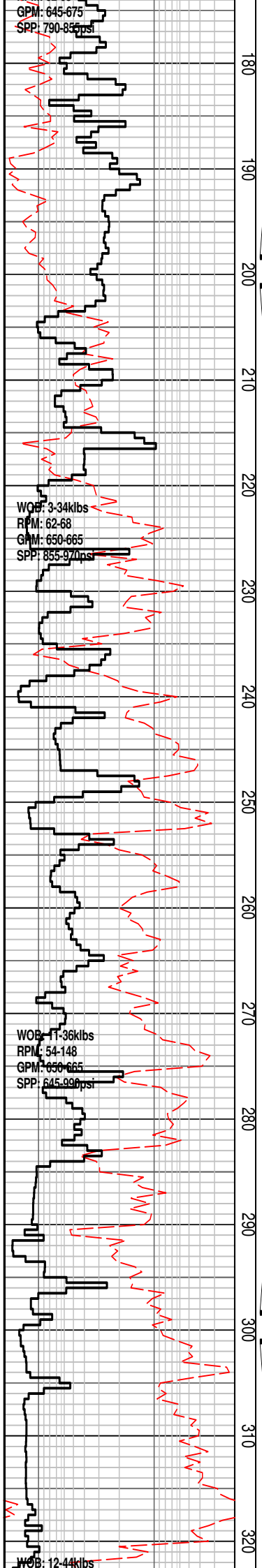


### HENRY-2 FORMATION EVALUATION LOG

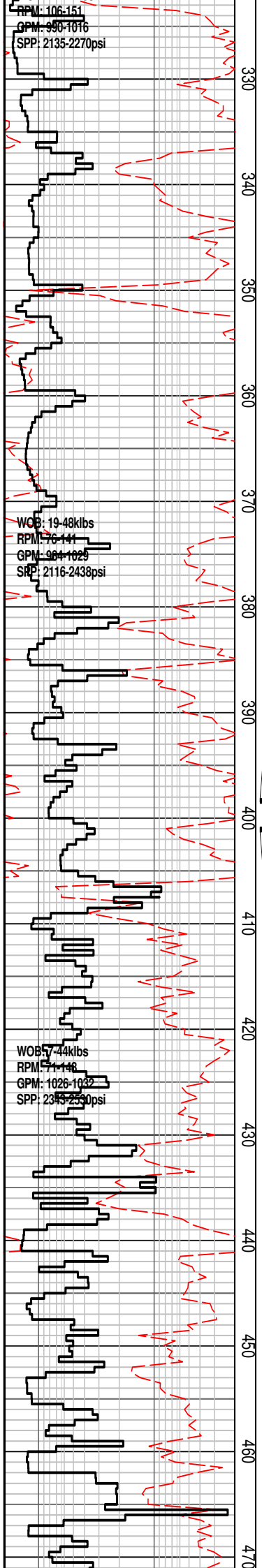
<p><b>WOB</b></p> <p>10   20   30   40</p> <p>klbf</p> <p><b>ROP</b></p> <p>200   20</p> <p>m/hr</p>	<p>MD meters 1:500</p>	<p>LITHOLOGY %</p>	<p>INTERPRETED LITHOLOGY</p>	<p>RESISTIVITY</p>	<p>CHROMATOGRAPH</p>	<p>CALC</p> <p>Calcite 0 100</p> <p>Dolomite 100 0</p> <p>CUT FLUORESCENCE PFG</p> <p>DIRECT FLUORESCENCE PFG</p>	<p>REMARKS</p>
<p>Vertical Datum = Mean Sea Level (MSL)</p>							
<p>Spud Henry-2 Well from 87.8m on 25 August 2008 at 03:15hrs</p>							
<p>NB 1 REED Y11C 690mm (26") w/ 914mm (36") Hole Opener 3x14, 1x16 jets, H.O. 4x24 jets In: 87.8m Out: 131.7m Drilled 43.9m in 2.70hrs [1-1-NO-A-3-I-NO-TD]</p>							
<p>WOB: 3-14klbs RPM: 37-100 GPM: 895-1005 SPP: 520-855psi</p> <p>762mm (30") Csg</p>							
<p>Set 762mm (30") Casing at 131.70m</p>							
<p>NB 2 HUGHES MXL-1V 445mm (17-1/2") 4x18 jets In: 131.7m Out: 657m Drilled 525.3m in 11.92hrs [0-0-NO-A-E-1-NO-TD]</p>							
<p>WOB: 1-12klbs RPM: 62-68</p>							
<p>Drill with seawater and PHG sweeps. Returns to seafloor.</p>							



Drill with seawater and PHG sweeps.  
Returns to seafloor.

Drill with seawater and PHG sweeps.  
Returns to seafloor.

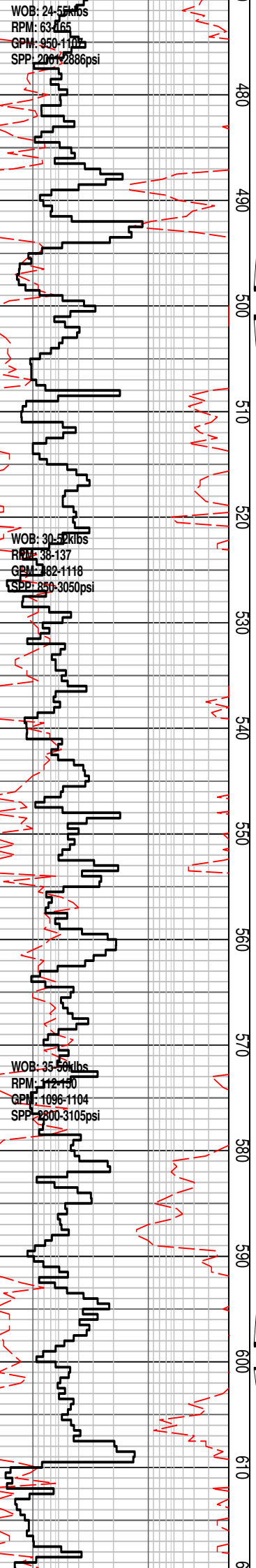
Drill with seawater and PHG sweeps.  
Returns to seafloor.



WOB: 24-55kbs  
RPM: 63-165  
GPM: 950-1100  
SPP: 2061-2886psi

WOB: 30-52kbs  
RPM: 38-137  
GPM: 182-1118  
SPP: 250-3050psi

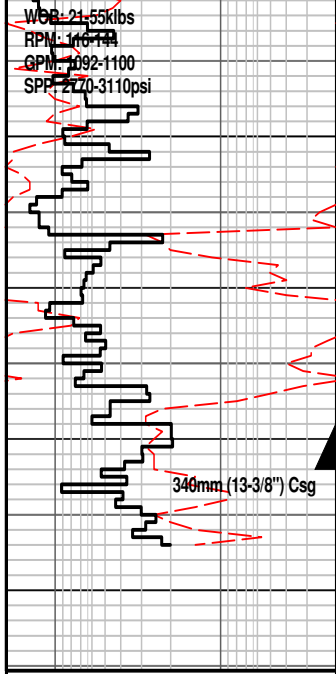
WOB: 35-50kbs  
RPM: 112-150  
GPM: 1096-1104  
SPP: 2800-3105psi



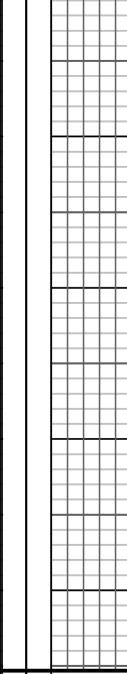
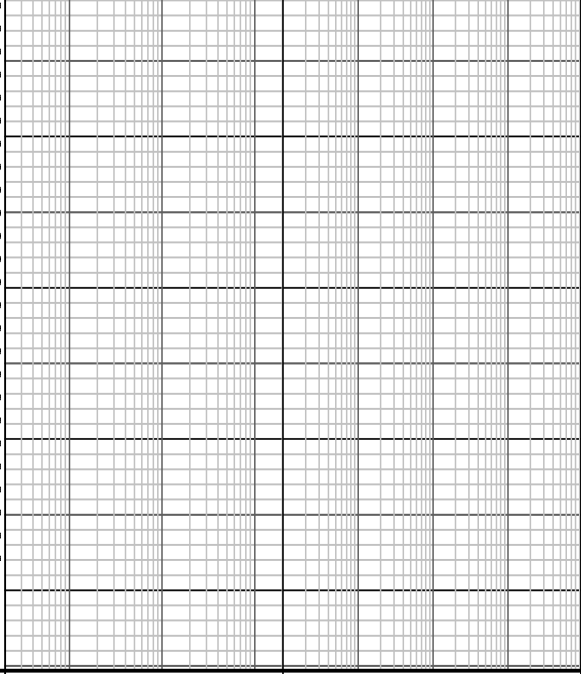
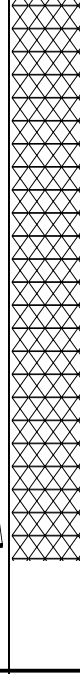
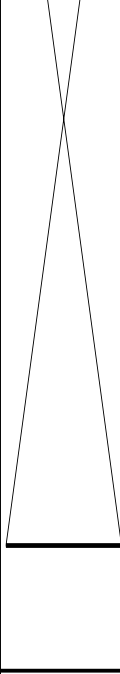
Drill with seawater and PHG sweeps.  
Returns to seafloor.

Drill with seawater and PHG sweeps.  
Returns to seafloor.

Drill with seawater and PHG sweeps.  
Returns to seafloor.

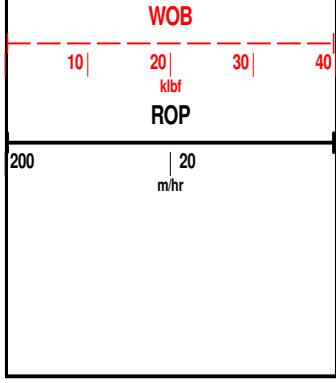


20  
630  
640  
650  
660



Set 340mm (13-3/8") Casing at 652m

**HENRY-2 FORMATION EVALUATION LOG**



MD meters 1:500

LITHOLOGY %

INTERPRETED LITHOLOGY

RESISTIVITY

CHROMATOGRAPH

CUT FLUORESCENCE	CALC	0	100
	Calcite	0	100
DIRECT FLUORESCENCE	CALC	100	0
	Dolomite	100	0

REMARKS